

The logo for Karyan Square features a stylized 'S' in orange and red, followed by a square icon containing a grid pattern. To the right, the word 'KARYAN' is written in a bold, grey, sans-serif font. Below this, the word 'Square' is written in a large, pink-to-purple gradient, sans-serif font. Underneath 'Square', the text 'WAVE CITY, NH 24, GHAZIABAD' is written in a smaller, grey, sans-serif font.

KARYAN
Square
WAVE CITY, NH 24, GHAZIABAD

The Karyan logo consists of a square icon with a grid pattern, followed by the word 'KARYAN' in a bold, grey, sans-serif font.

KARYAN

M/s KARYAN INFRACOM LLP (Promoter of the Project)

HIGH STREET RETAIL SPACES

Call Us For Booking: 8929 779 921



Karyan Infracom is backed by over 15 years of experience and expertise of the Karyan Group along with select promoters of the Saviour Group - premier real estate developers of Delhi/NCR, offering residential, commercial, retail projects and warehousing in PAN India.

PROJECT CONCEPTULISED BY STUDIO LOTUS

NEW DELHI

AWARD
WINNING
DESIGN FIRM

Studio Lotus is an international award-winning design firm. They master in planning, architecture and interiors of large-scale development and commercial spaces, hotels and resorts, government projects.

The most significant clientele includes Max Estates, Royal Enfield, Godrej Properties, DLF, RAAS Group of Hotels, Taj Hotels, Radisson Hotels, Aloft Hotels, Oberoi Realty & many more renowned companies.

A Plus Design Associates

A Plus Design Associates is accomplished in the field of planning, design, and execution of urban projects. They have designed and built around 7 million sq. mtr. built-up area which includes townships, commercial complexes, residential developments, hospitals and entertainment centers.

CESPL

With over 33 years of experience, in mechanical, electrical, plumbing, engineering design and consultancy, CESPL has handled more than 500 projects which include group housing, commercial, institutional and township planning projects.

Call Us For Booking: 8929 779 921

KARYAN Square



Call Us For Booking: 8929 779 921

PROJECT ADVANTAGES

PRIME LOCATION
AT NH-24
34 LANE EXPRESSWAY

RAIN WATER
HARVESTING

SURROUNDED BY
DEVELOPED SECTORS

BEAUTIFULLY DESIGNED
FACADE BY LOTUS DESIGN

AMPLE CAR
PARKING SPACE

WIDE CORRIDORS

LIFTS &
ESCALATORS

24X7
POWER BACKUP

24X7 ADVANCED
SECURITY



EXCELLING EXPECTATIONS

243
SHOPS

FINE DINING &
TERRACE
RESTAURANTS

2 SIDE
OPEN PLOT

100% PAID
UP LAND

9185.33
SQUARE METRE
TOTAL AREA

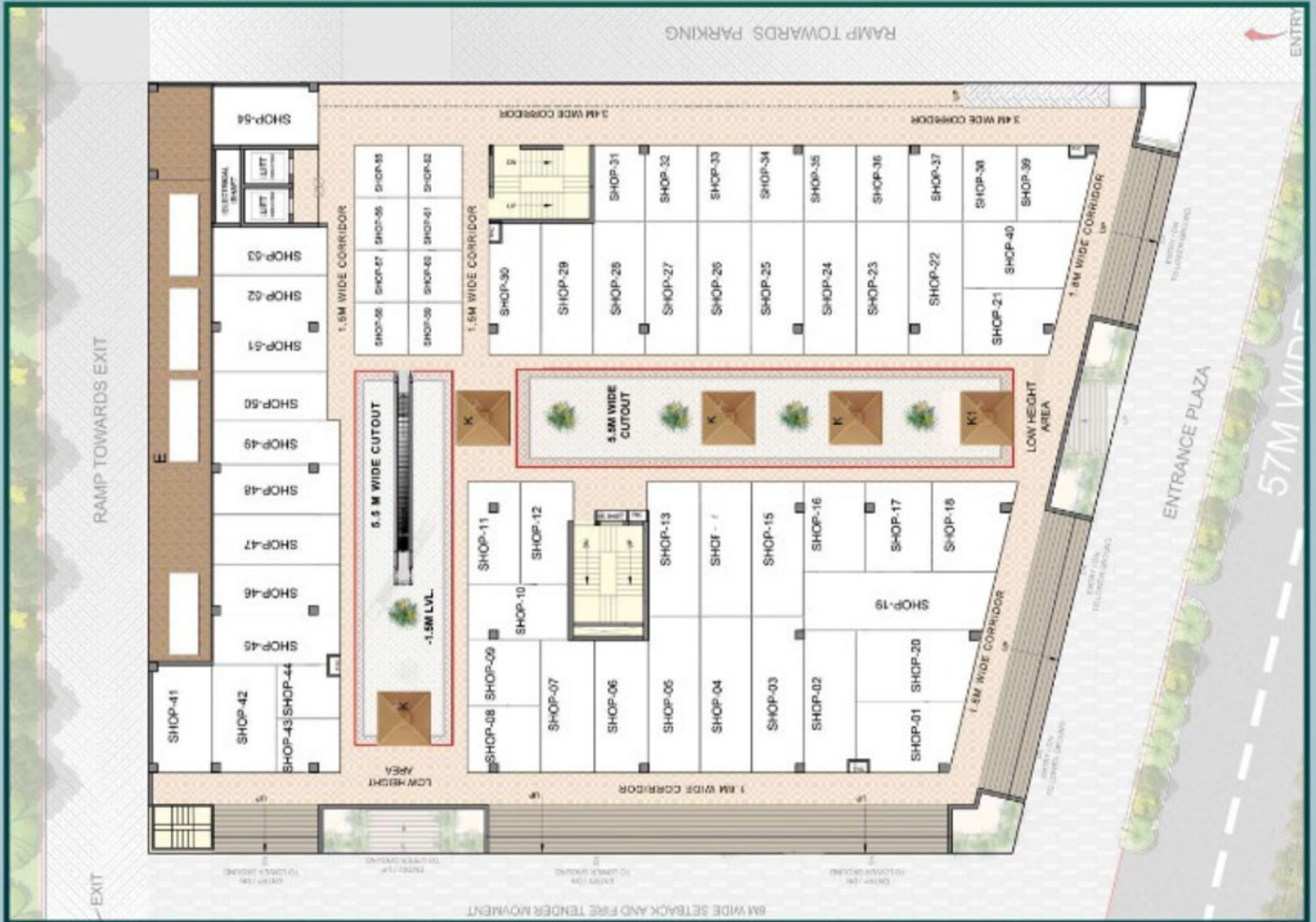
Call Us For Booking: 8929 779 921

GROUND FLOOR & SITE PLAN



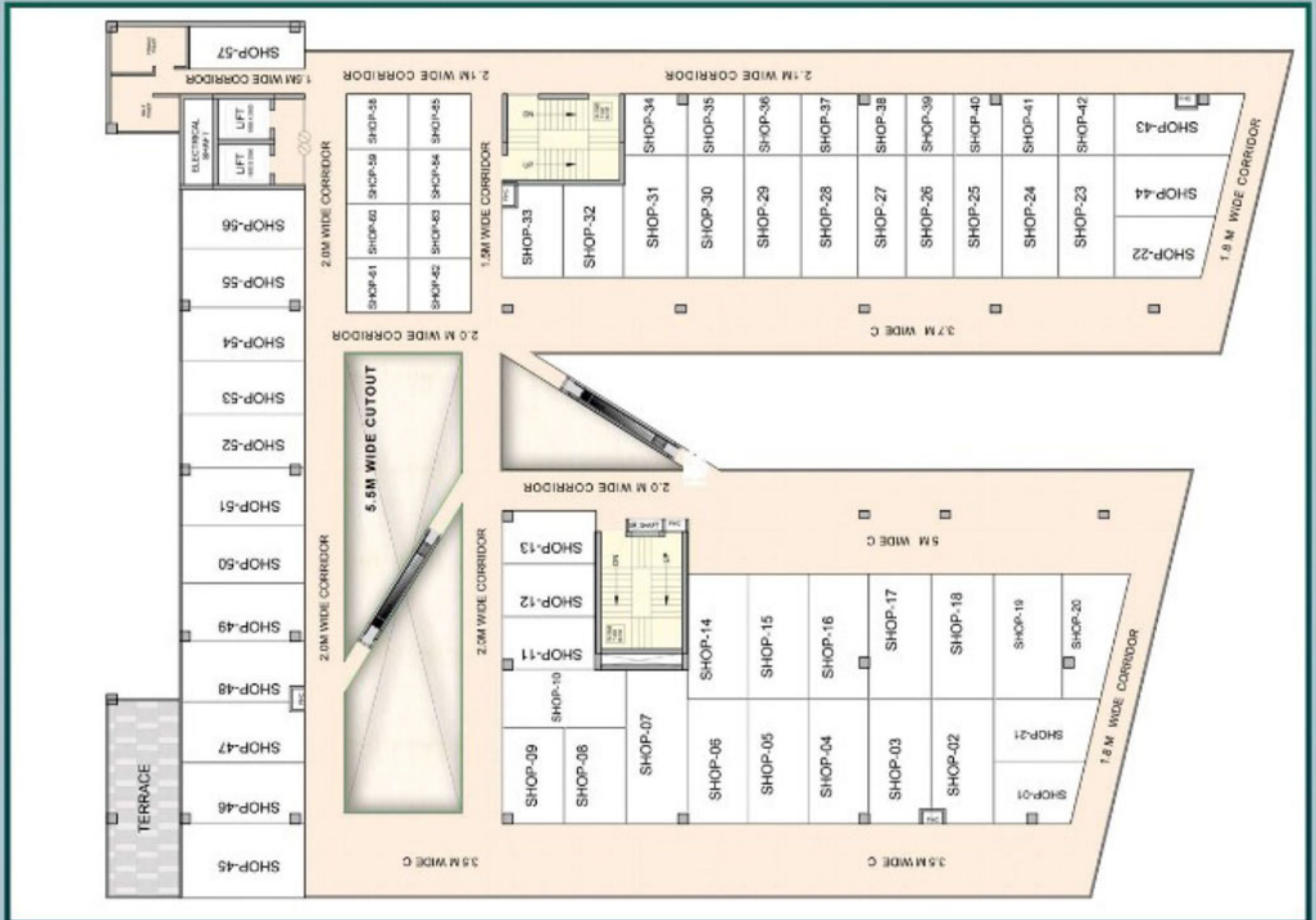
Call Us For Booking: 8929 779 921

LOWER GROUND FLOOR PLAN



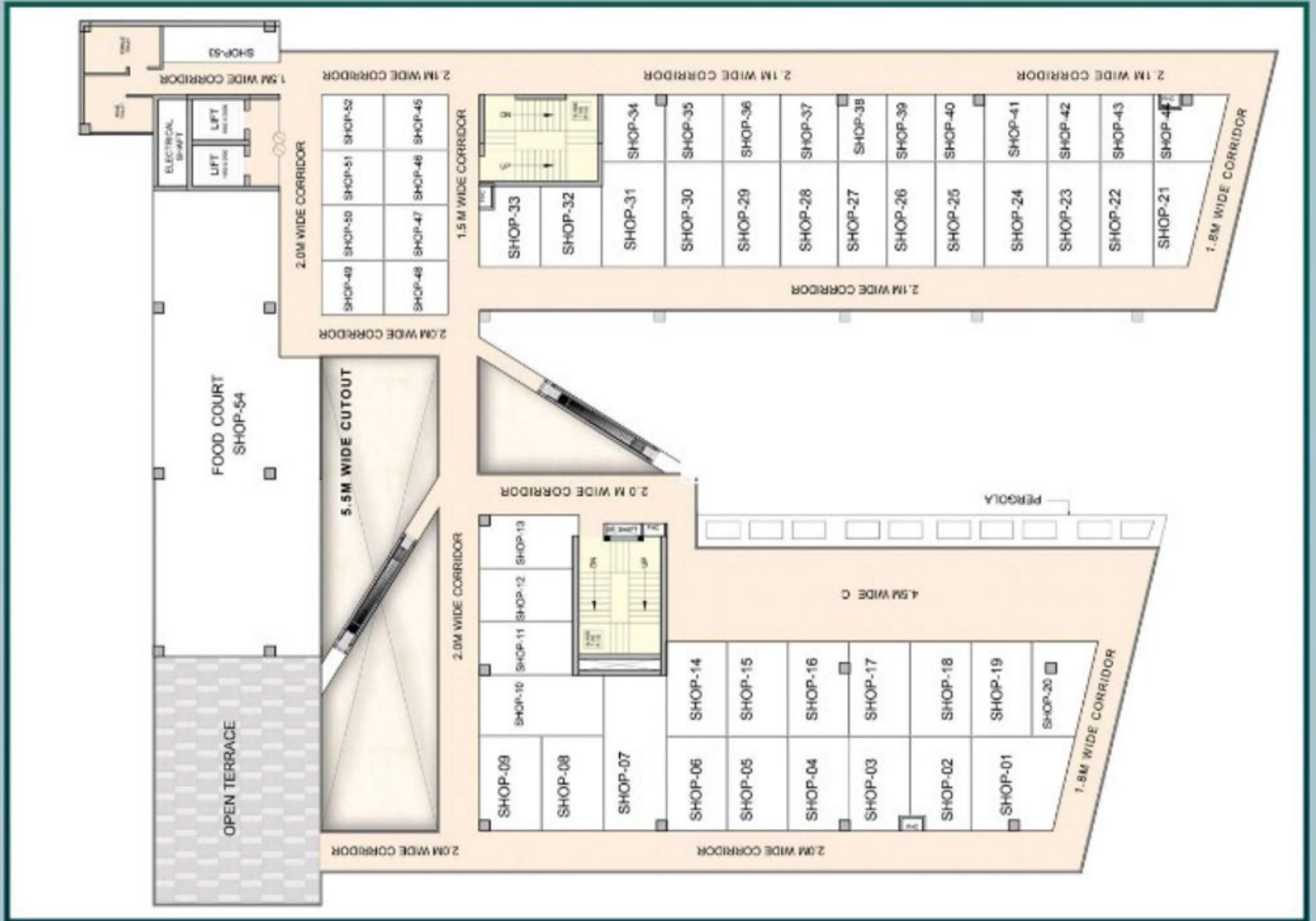
Call Us For Booking: 8929 779 921

FIRST FLOOR PLAN



Call Us For Booking: 8929 779 921

SECOND FLOOR PLAN



Call Us For Booking: 8929 779 921

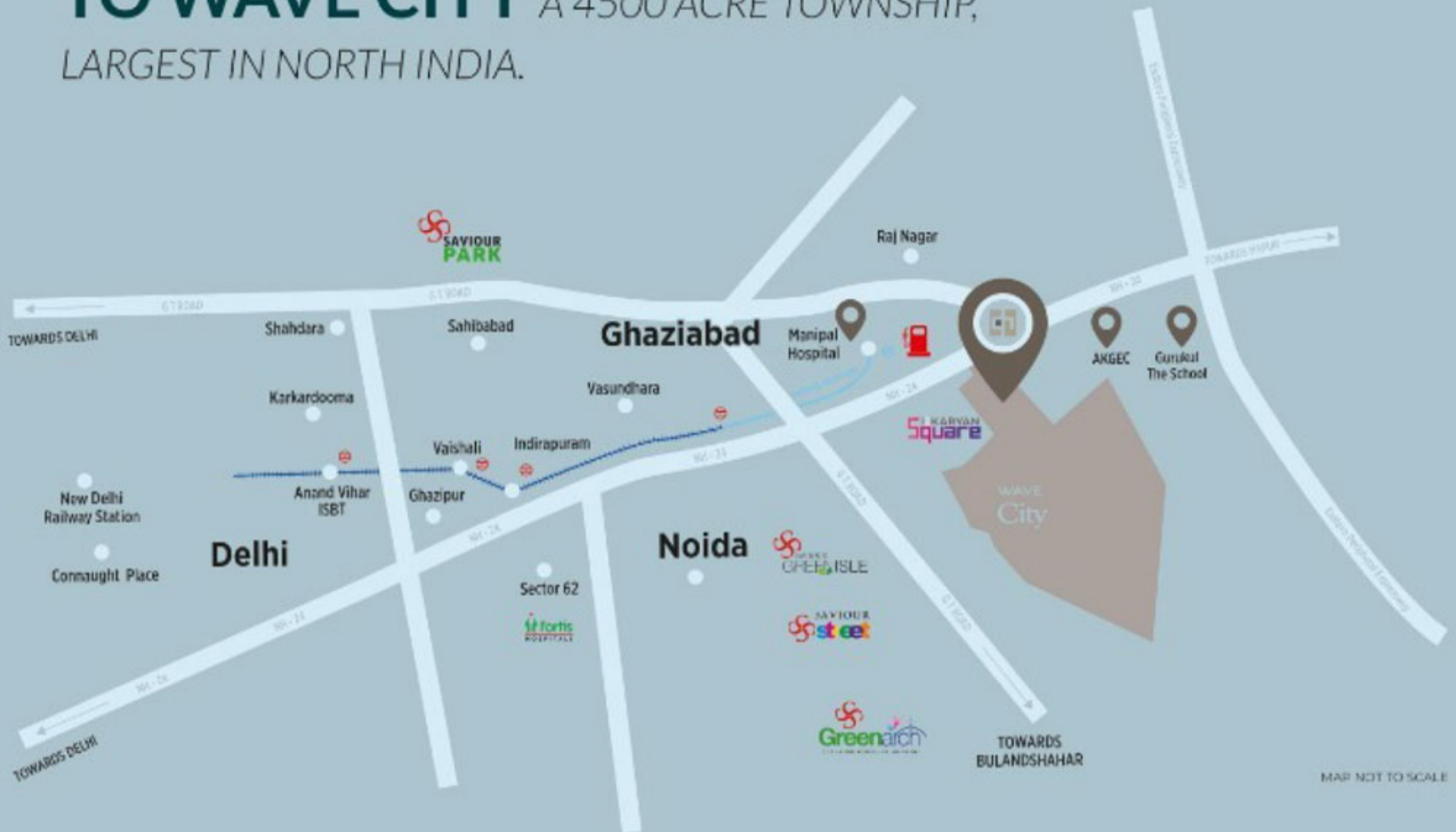
THIRD FLOOR PLAN



Call Us For Booking: 8929 779 921

STRATEGICALLY POSITIONED **AT NH 24** PIVOTAL

TO WAVE CITY A 4500 ACRE TOWNSHIP,
LARGEST IN NORTH INDIA.



5 Min Drive to Eastern Peripheral Expressway*



5 Min Drive to Delhi Meerut Expressway*



15 Min From Sector 62 Noida, Metro Station*



20 Min From Delhi*



30 min From Akshardham Temple*

*As per Google Maps. Transit time estimates as at 6 AM. The travel time mentioned above is subject to change during peak hours.

Call Us For Booking: 8929 779 921



M/s KARYAN INFRACOM LLP (Promoter of the Project)

Site Office:
1A, Sector-02 (Pinewood Enclave)
Wave City, NH-24, Ghaziabad

RERA Regn. No.: UPRERAPR1678096
www.up-rera.in

Disclaimer: Images in the brochure used for artistic impression to give the conceptual sense of possible lifestyle. It can be changed at the discretion of the developer and is not a legal commitment on design or specifications \ 1 sq. mtr. = 10.764 sq. ft. and 1 acre = 4047 sq. mtr. (approx.). * Terms & Conditions apply.

Call Us For Booking: 8929 779 921